

### Explanation

	Pennsylvanian shales: undifferentiated
	Caney shale/Woodford shale
	Hunton Group
	Sylvan shale
	Viola limestone
	Bromide, Tulip Creek and McLish Formations
	Oil Creek and Joins Formations
	Arbuckle Group: West Spring Creek and Kindblade Fms.
	Lower Arbuckle Gp. and Timbered Hills Group: Cool Creek and McKenzie Hill Fms., Butterly dolomite and Timbered Hills Group
	Cambrian and Precambrian igneous rocks

Vertical Scale: 500 feet  
Horizontal Scale: 2000 feet

Plate 1: West to East Cross Section across the Hunton Anticline and into the Franks Graben

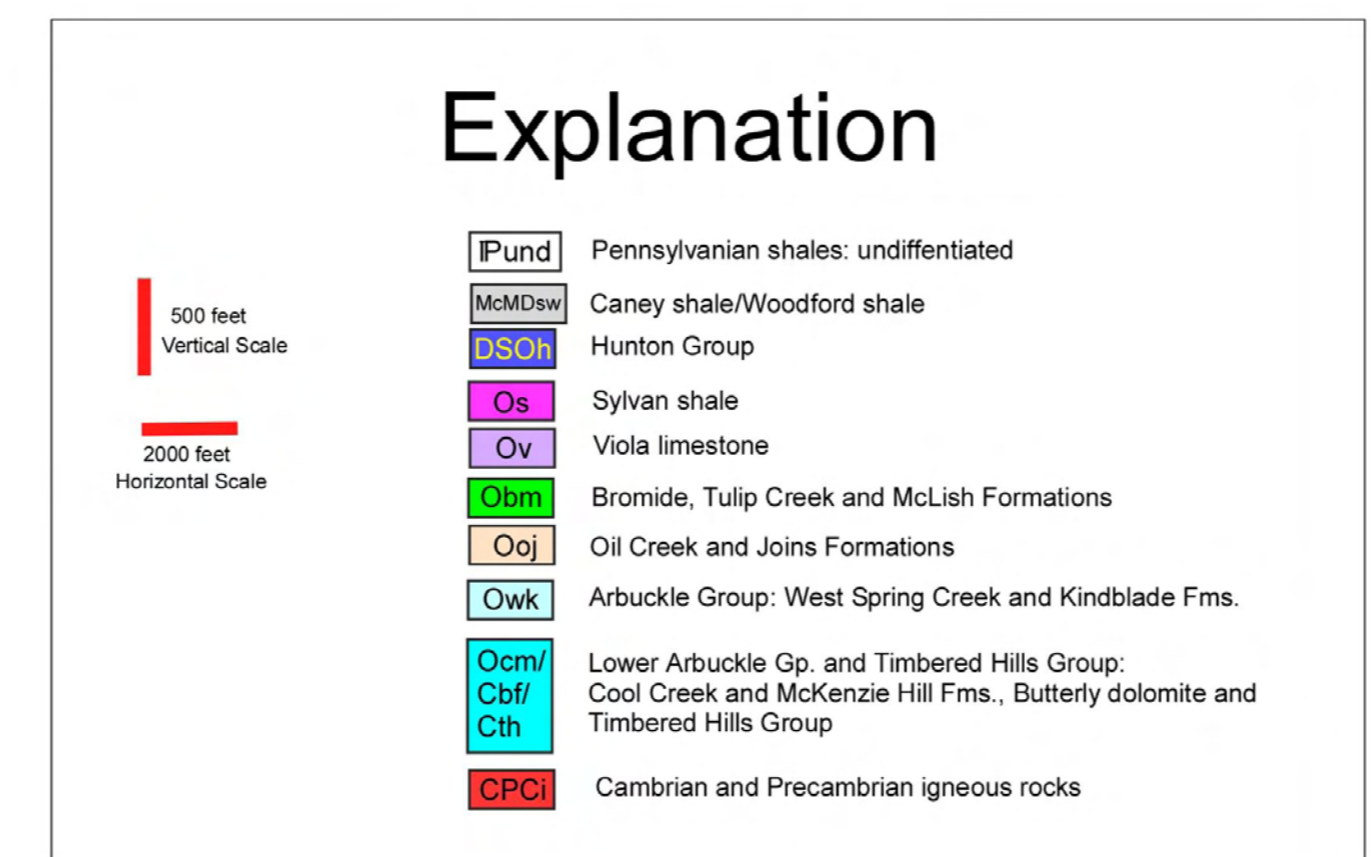
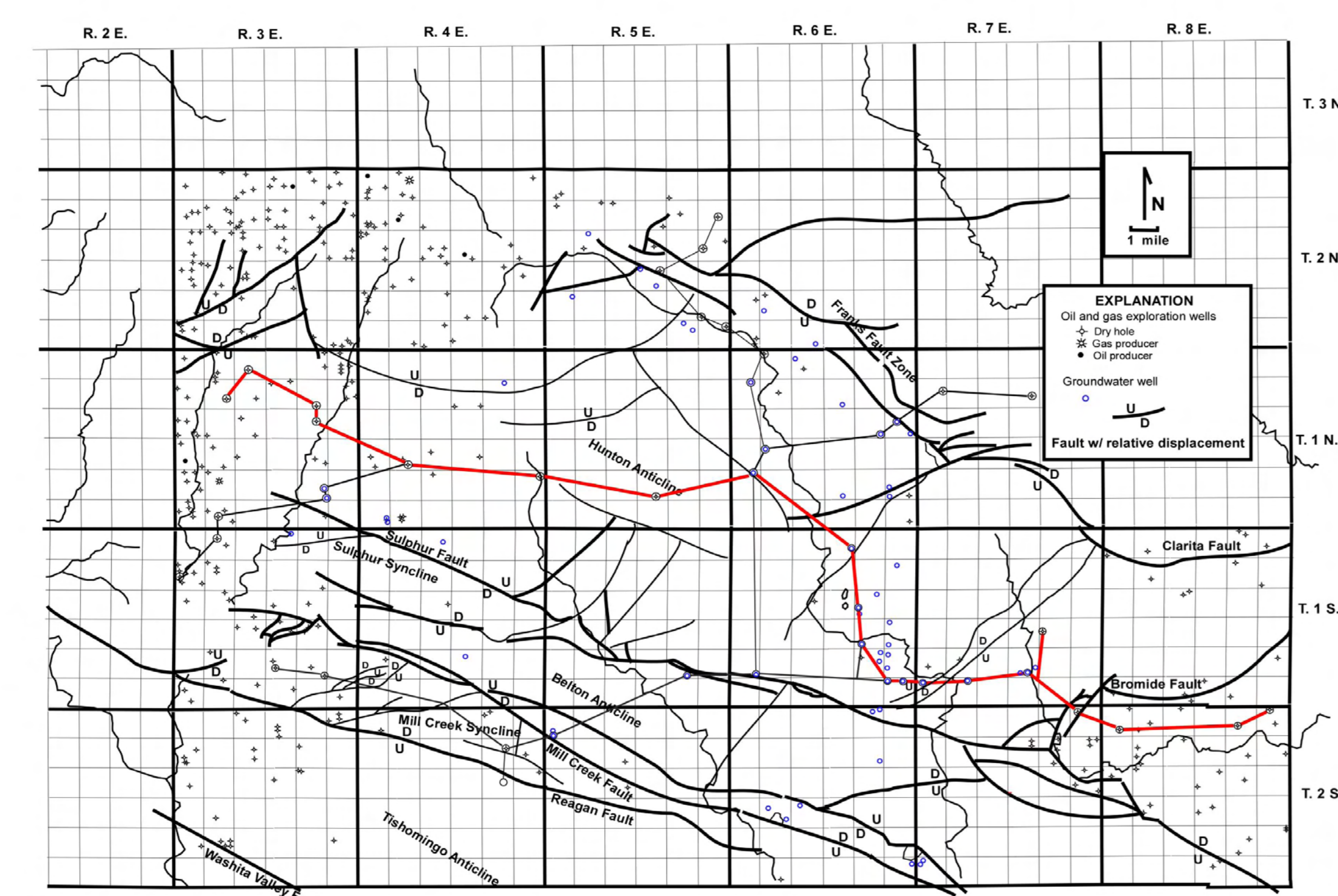
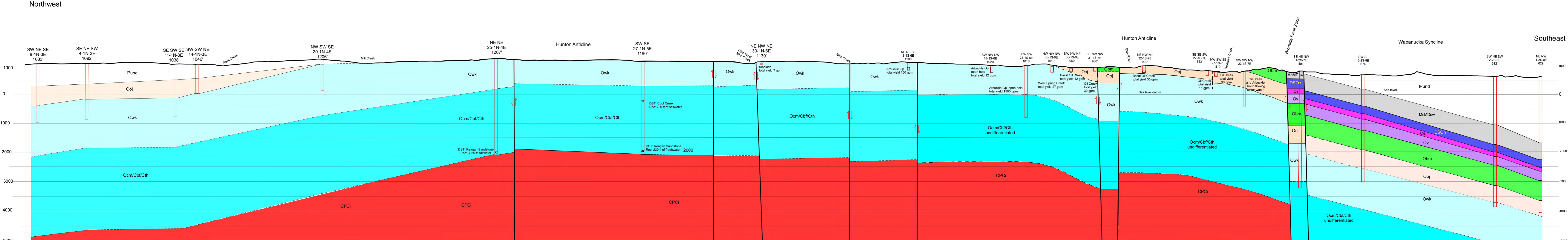
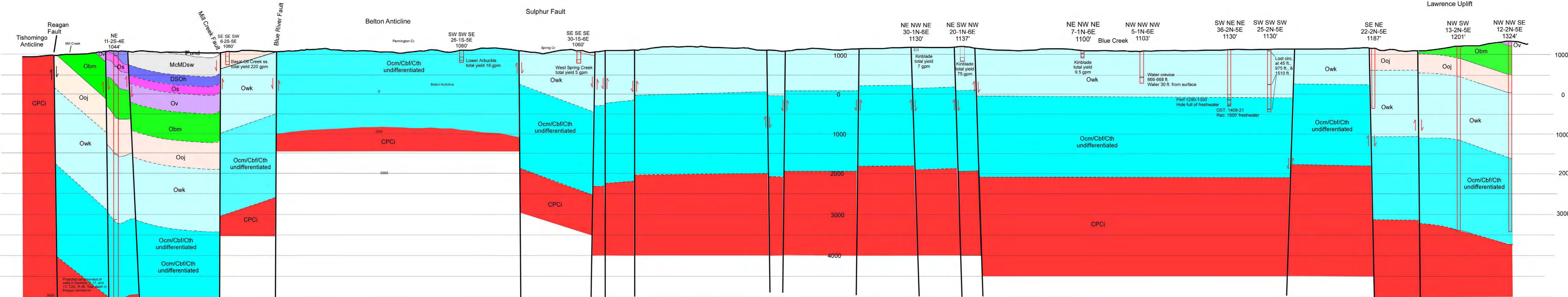


Plate 2: Northwest to Southeast Cross Section extending across the Hunton Anticline and into the Wapanucka Syncline



### Explanation

500 feet Vertical Scale  
2000 feet Horizontal Scale

IPund	Pennsylvanian shales: undifferentiated
McMDsw	Caney shale/Woodford shale
DSOh	Hunton Group
Os	Sylvan shale
Ov	Viola limestone
Obm	Bromide, Tulip Creek and McLish Formations
Ooj	Oil Creek and Joins Formations
Owk	Arbuckle Group: West Spring Creek and Kindblade Fms.
Ocm/Cbf/Cth	Lower Arbuckle Gp. and Timbered Hills Group; Cool Creek and McKenzie Hill Fms., Butterly dolomite and Timbered Hills Group
CPCi	Cambrian and Precambrian igneous rocks

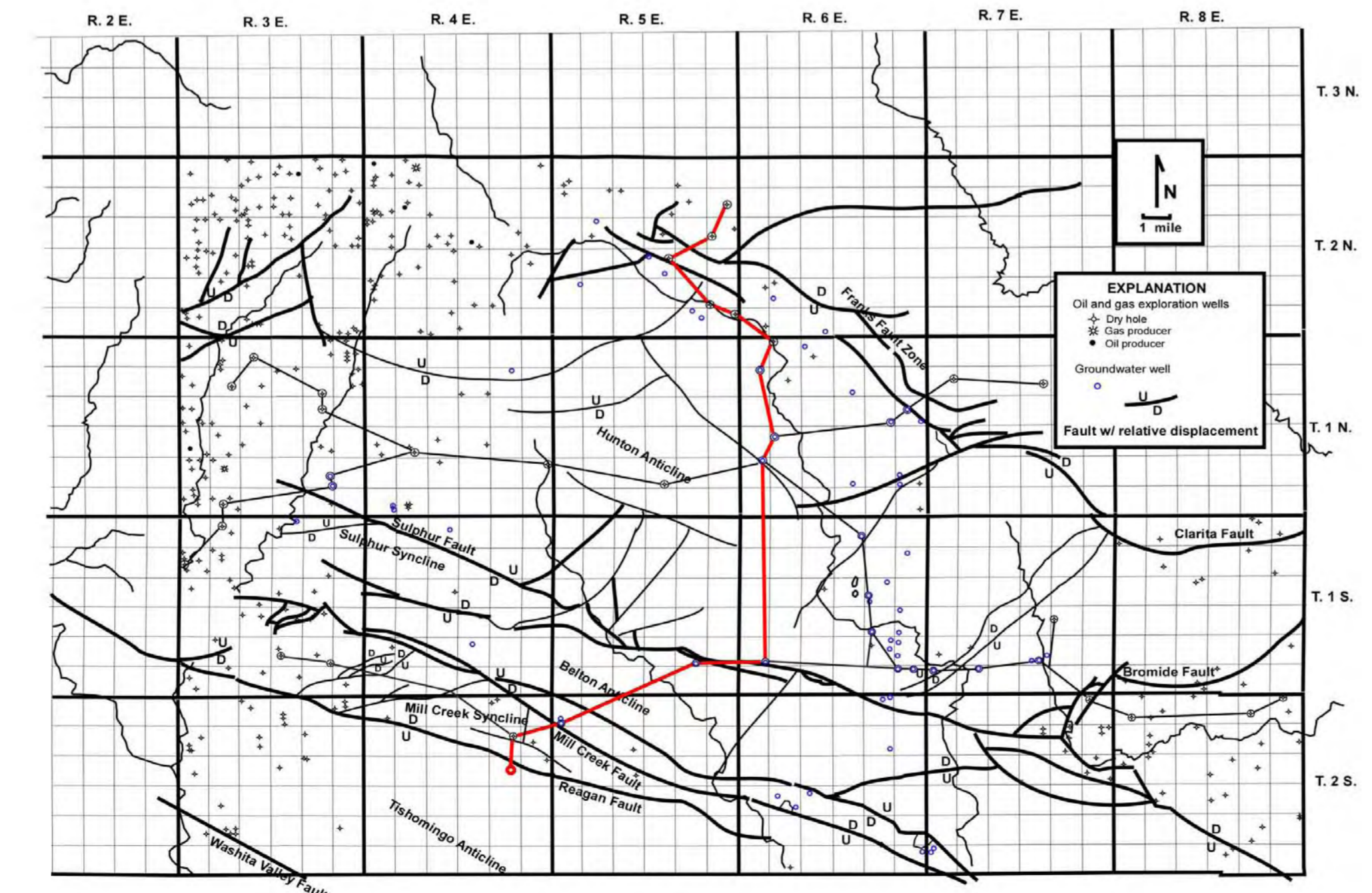
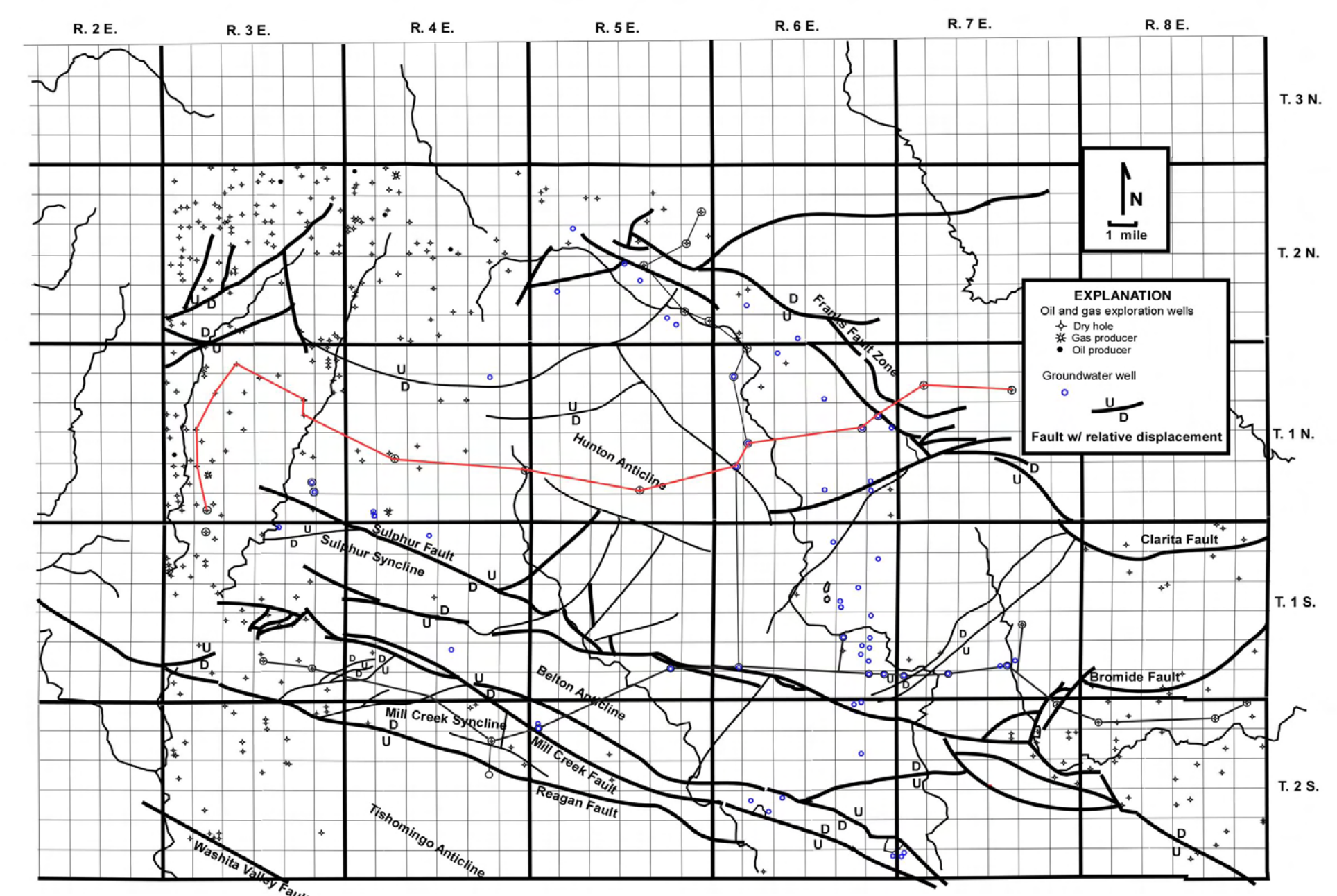
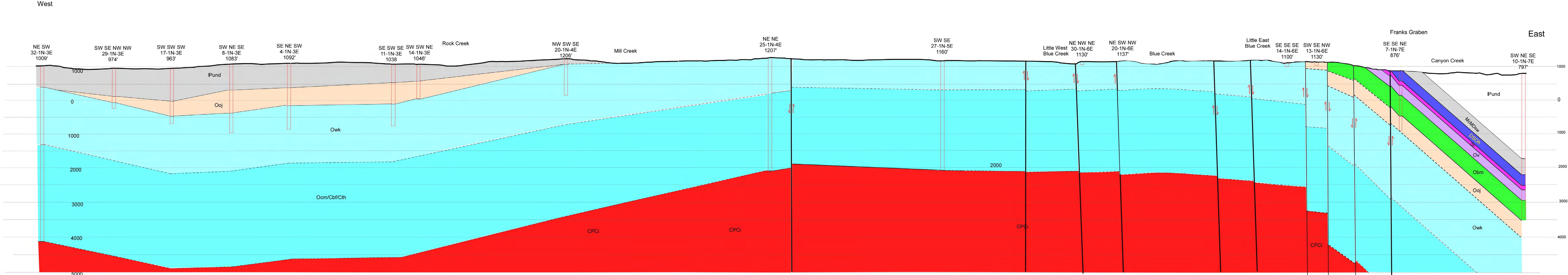


Plate 3: South to North Cross Section extending from the Tishomingo Anticline, across the Mill Creek Syncline, Belton and Hunton Anticlines, to the Lawrence Uplift

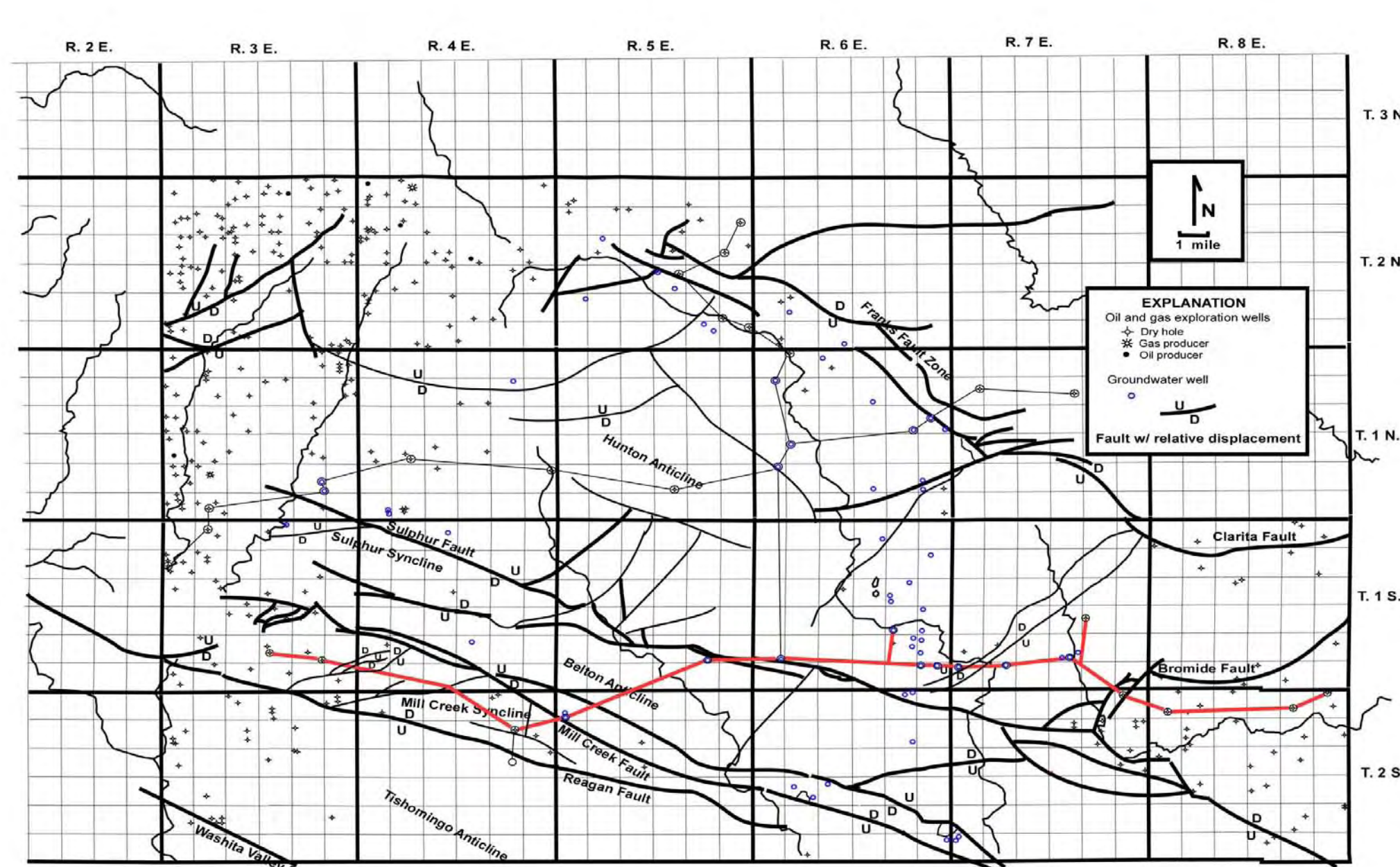
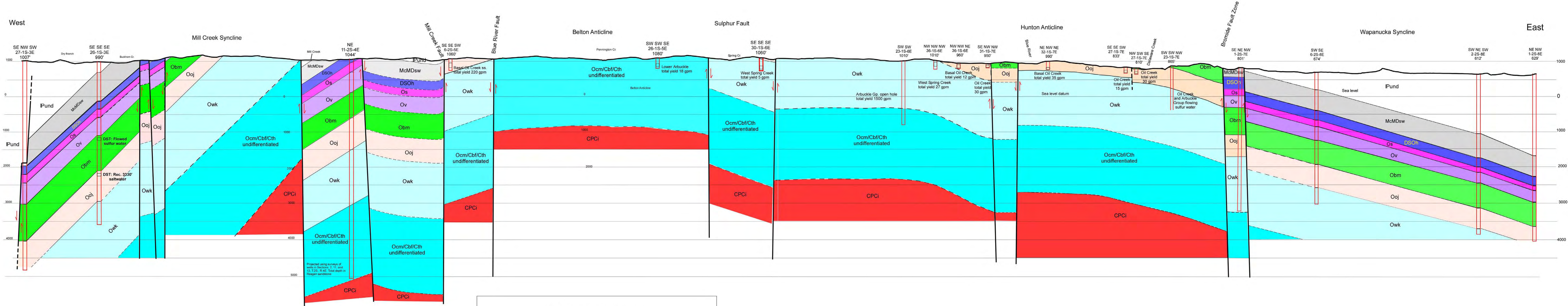


### Explanation

500 feet Vertical Scale  
2000 feet Horizontal Scale

IPund	Pennsylvanian shales: undifferentiated
McMDSw	Caney shale/Woodford shale
DSOH	Hunton Group
Os	Sylvan shale
Ov	Viola limestone
Obm	Bromide, Tulip Creek and McLish Formations
Ooj	Oil Creek and Joins Formations
Owk	Arbuckle Group: West Spring Creek and Kindblade Fms.
Ocm/Cbf/Cth	Lower Arbuckle Gp. and Timbered Hills Group: Cool Creek and McKenzie Hill Fms., Butterly dolomite and Timbered Hills Group
CPCI	Cambrian and Precambrian igneous rocks

Plate 4: West to East Cross Section extending across the Hunton Anticline into the Franks Graben



### Explanation

500 feet  
Vertical Scale

2000 feet  
Horizontal Scale

IPund	Pennsylvanian shales: undifferentiated
McMDsw	Caney shale/Woodford shale
DSOsh	Hunton Group
Os	Sylvan shale
Ov	Viola limestone
Obm	Bromide, Tulip Creek and McLish Formations
Ooj	Oil Creek and Joins Formations
Owk	Arbuckle Group: West Spring Creek and Kindblade Fms.
Ocm/Cbf/Cth	Lower Arbuckle Gp. and Timbered Hills Group: Cool Creek and McKenzie Hill Fms., Butterly dolomite and Timbered Hills Group
CPCI	Cambrian and Precambrian igneous rocks

Plate 5: West to East Cross Section including the Mill Creek Syncline Belton Anticline, Hunton Anticline and Wapanucka Syncline